

## WILDLIFE

The Reserve's varied habitats support a wide range of wildlife. You should be on the lookout for Ringtail Possums, Swamp Wallaby and Echidnas can often be seen searching for ants. If you're lucky you might sight the secretive Swamp Antechinus which dwells in thick swamp habitat. Tiger snakes and Swamp Skink are sometimes seen sunning themselves on a warm day. Keep an ear open for some of our resident frog species including the Brown Striped Marsh Frog ("weep-eeep-eeep") or the Spotted Grass Frog ("frik.....frik").

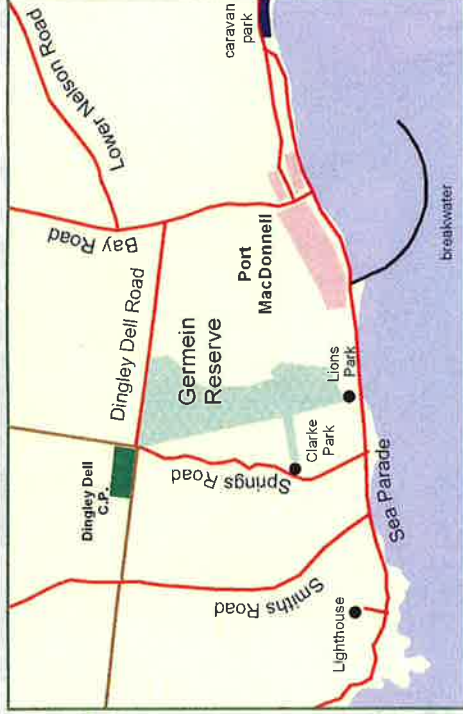


Birds are abundant in the Reserve. Wrens, Honeyeaters and the rare Crested Shrike Tit may be found in the woodlands. The reserve also supports habitat for one of the worlds most endangered birds, the Orange Bellied Parrot. Swans, Ducks, Sandpipers, Ibis and the Royal Spoon-bill can be observed on open water. The waters of Germein Reserve are home to Blackfish, Southern Pygmy Perch and the Short Finned Eel which travels all the way from the Coral Sea to the Reserve's wetlands.

## HELP US MAINTAIN GERMEIN RESERVE

- The reserve is closed on total fire ban days
- No pets allowed
- No camping in the reserve
- Do not disturb or remove plants or animals
- Motorbikes are not permitted
- Fires are not permitted in the Reserve. BBQ sites are provided at Clarke Park Picnic Ground and Lions Park

## LOCATION MAP



## Further Enquiries

Port MacDonnell Landcare Group

Phone (08) 8738 8070

District Council of Grant

Phone (08) 8721 0444

Email: [portmaclandcare@yahoo.com](mailto:portmaclandcare@yahoo.com)

Photos kindly provided by: Peter Fuller and the Department for Environment & Heritage

## Discovering

# GERMEIN RESERVE



## Diverse and unique habitats



## GERMEIN RESERVE

Germein Reserve is a diverse and unique remnant of our natural environment, in a region where over 95% of native vegetation has been cleared and most wetlands drained.



Throughout the park you can see an array of native flora and fauna unique to this region.

The 55 ha reserve was established in 1978 and expanded in 1995. It is named after Cape Northumberland's first lighthouse keeper, Ben Germein. The reserve is maintained and enhanced by local community groups, allowing visitors to experience this valuable habitat.



## WHAT TO DO

### Picnic Sites:

Picnic tables are provided at Clarke Park, Lions Park, the Frog Pond and at the Boardwalk

### Wildlife Observation:

A shelter shed/bird hide is located near Blackfish Lagoon, where birds can be observed including the Swamp Harrier

### Walking Trails:

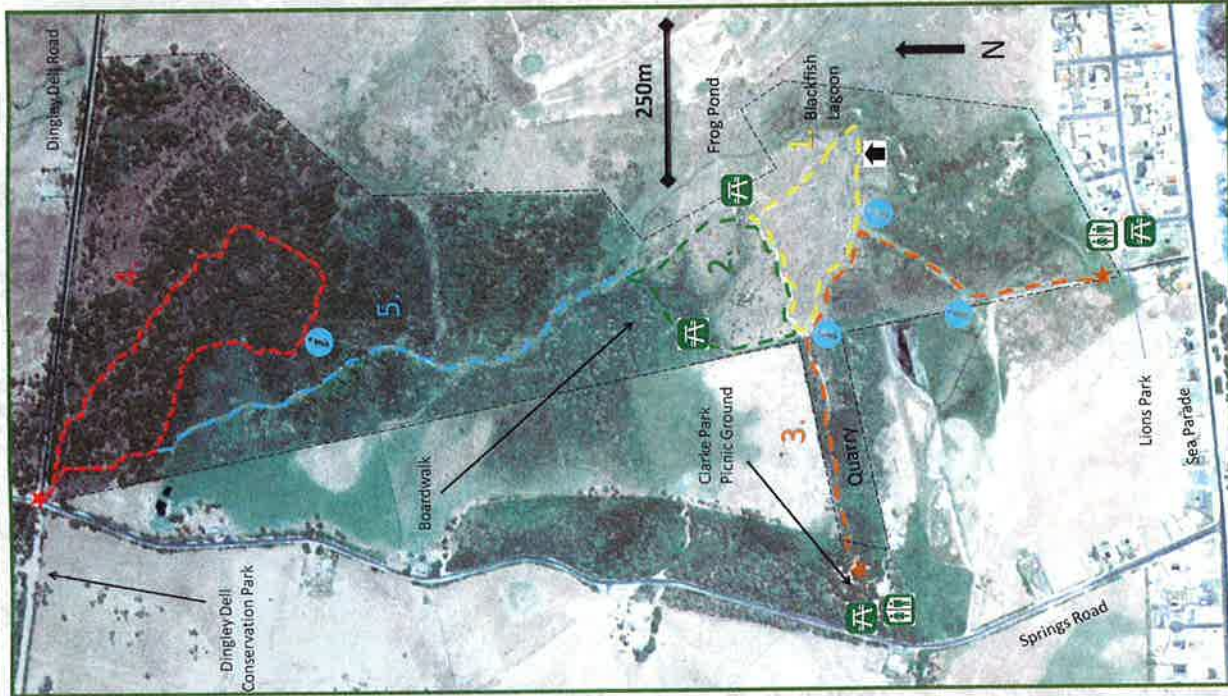
Enjoy the network of walking trails, providing access to much of the Reserve.

Trail heads are at Dingley Dell rd, Clarke Park and the Lions Park. Bring your binoculars and camera.

During the winter months, waterproof shoes and a rain jacket are recommended.



## WALKING TRAILS OF GERMEIN RESERVE



Information point:   
 Bird Hide:   
 Toilets:

Picnic Area:   
 Walking Trail:   
 Trail Head:

### 1. Frog Pond Walk

800m Easy

A short walk through seasonally inundated wetlands, it meanders through an old quarry containing many Hibbertias and Correas. Features are the Frog Pond Boardwalk, and the Blackfish Lagoon Boardwalk, viewing platform and shelter shed/bird hide. Vegetation is mainly grasses, reeds and rushes.

### 2. Tea Tree Boardwalk

750m. Easy

This track descends through Woolly Tea-Tree (*Leptospermum lanigerum*). It is seen growing in its two colour forms, light green and blue-grey. Small five petalled, white flowers appear in spring. The southern end of this walk crosses a bridge over an old hand sawn drain cut out of solid limestone by unemployed men after World War 1. Parts of this cutting are 3 metres deep.

### 3. Lions Park To Clarke Park

1000m one way. Easy

A walk through wetlands to the Clarke Park picnic ground via a graded track and a well maintained path. There is an optional return via Springs Road and Sea Parade. This path wheel chair friendly from Lions Park to the Frog Pond Walk junction.

### 4. Loop Walk

1,250m. Easy

This trail provides a wilderness walk through the higher ground. The dominant tree you will see is the "Dingley Dell Gum" (*Eucalyptus leucoxylon megalocarpa*), distinguished by its large gum nuts and large creamy white to pink flowers in winter. Germein Reserve supports one of the few remaining stands of this rare tree.



### 5. Connector Trail

800m moderate

A rougher trail for the more adventurous which follows the old drain line and can become quite muddy in winter!

Use this trail to combine other walks and explore the whole park.